

TSXCUSBMBP Communication Adapter

How to install the driver.

The driver must be installed before connecting the Adapter



- *Install the new MBX Driver V6.0.0 Update 20070615.*

- *You ordered your TSXCUSBMBP after October 2007*

The CD-ROM driver is provided with the adapter. Insert it into your CD-ROM drive, the installation should begin automatically. Else from the Start menu select RUN, type in X : Setup.exe file and Press OK.

- *You ordered your TSXCUSBMBP before October 2007*

You will find this driver on PI@net or Telemecanique.com site.

Copy it on your PC, then from the Start menu select RUN, browse the Setup.exe file and Press OK.

TSXCUSBMBP Communication Adapter

How to install the Driver.

Do not connect the ModbusPlus network cable yet



- *Insert the USB cable from the adapter into the USB port on your PC.*

- ☐ *The Power LED will light.*

- ☐ *Messages will pop up*

“Found New Hardware”

“Welcome to the Found New Hardware Wizard” window will open.

*Select “No, Not this time” and click **Next***

*Select **Install the software automatically** and click **Next***

*Click **Finish***

*If this is the first time the adapter has been plugged into the system; the “**Found New Hardware**” message will pop up again and you will have to repeat all steps above.*

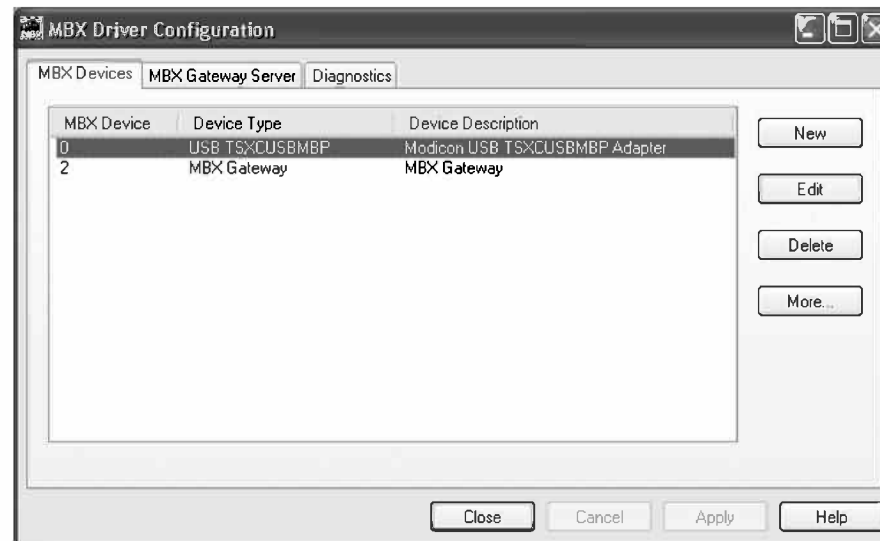
*The last message should be “**New Hardware is ready to use**”*

The ModbusPlus Status LED should blink three flashes, then pause.

TSXCUSBMBP Communication Adapter

How to Configure the Driver.

- *Before to connect the ModbusPlus cable modify the setting of your adapter.*
- *Open the MBX Driver configuration screen*
 - *Start / All Programs / Schneider Electric MBX Driver Suite*
 - *MBX Driver / MBX Driver Configuration*
 - *Select Device Type **USB TSXCUSBMBP** and click **Edit***
 - *Click **Launch Device Manager***

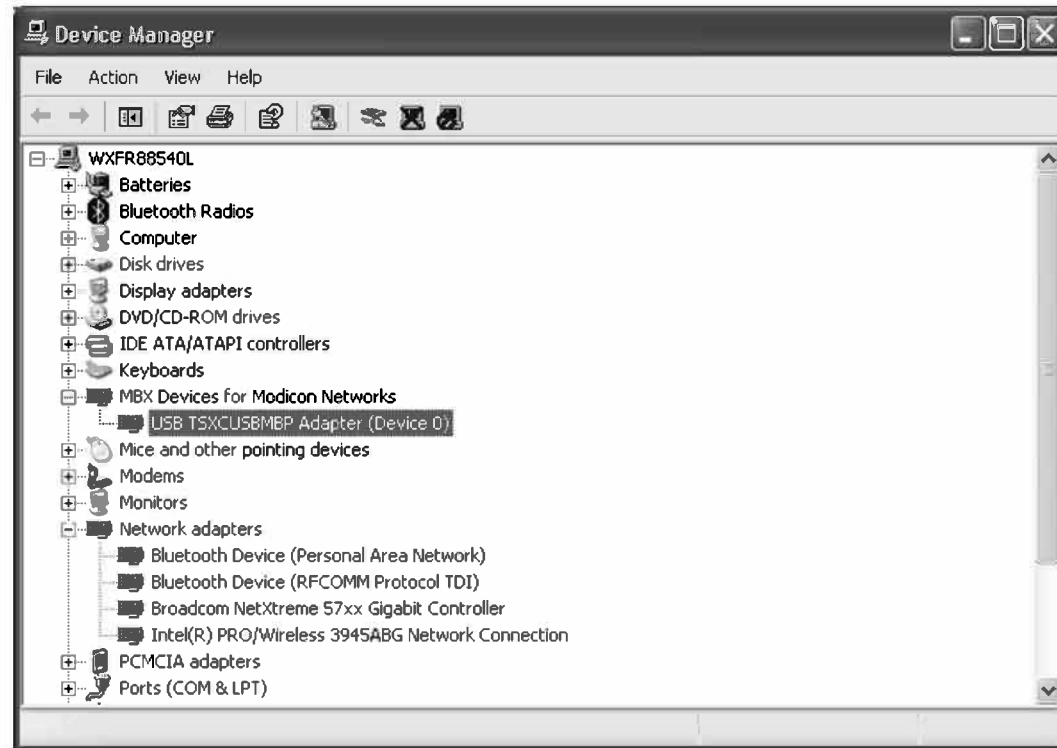


TSXCUSBMBP Communication Adapter

How to Configure the Driver.

■ *Device Manager*

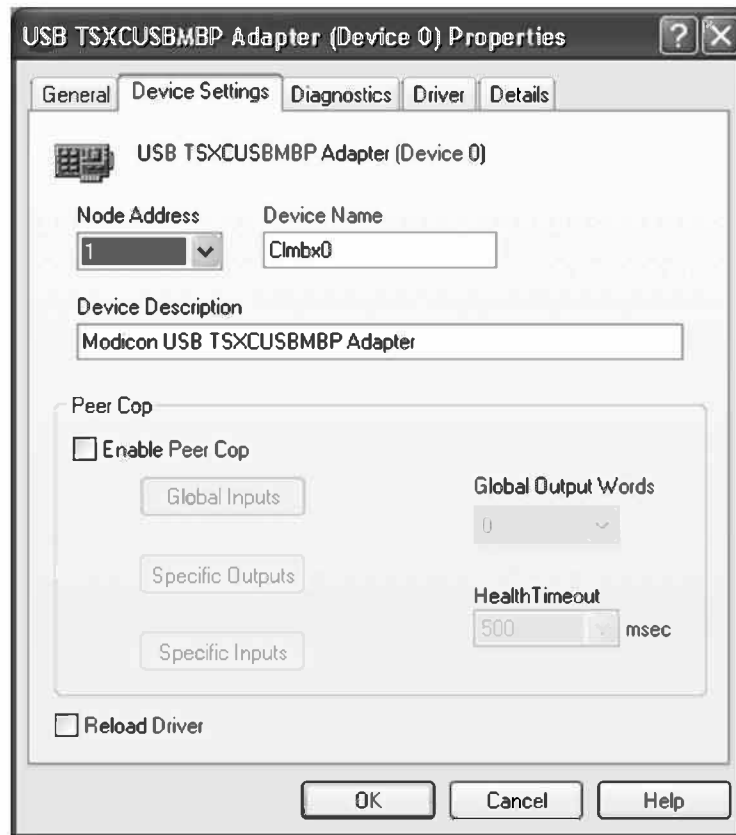
- *Select USBTSXCUSBMBP Adapter (device 0) and double click*
- *MBX Driver / MBX Driver Configuration*



TSXCUSBMBP Communication Adapter

How to Configure the Driver.

- *USB TSXCUSBMBP Adapter (Device 0) Properties screen*



- *Device Settings screen*

Set an address

Now you can connect the ModbusPlus network cable to the modbus port on the TSXCUSBMBP

